

WELCOME TO

T A M A

TAMA takes your senses on a scintillating experience through the curations of world class chefs, sommeliers, and servers.

Tama's modern Australian cuisine will delight the most sophisticated palates. Beneath the heritage beams and soaring ceilings, the luxurious décor is guaranteed to make a memorable impression on everyone who steps inside.

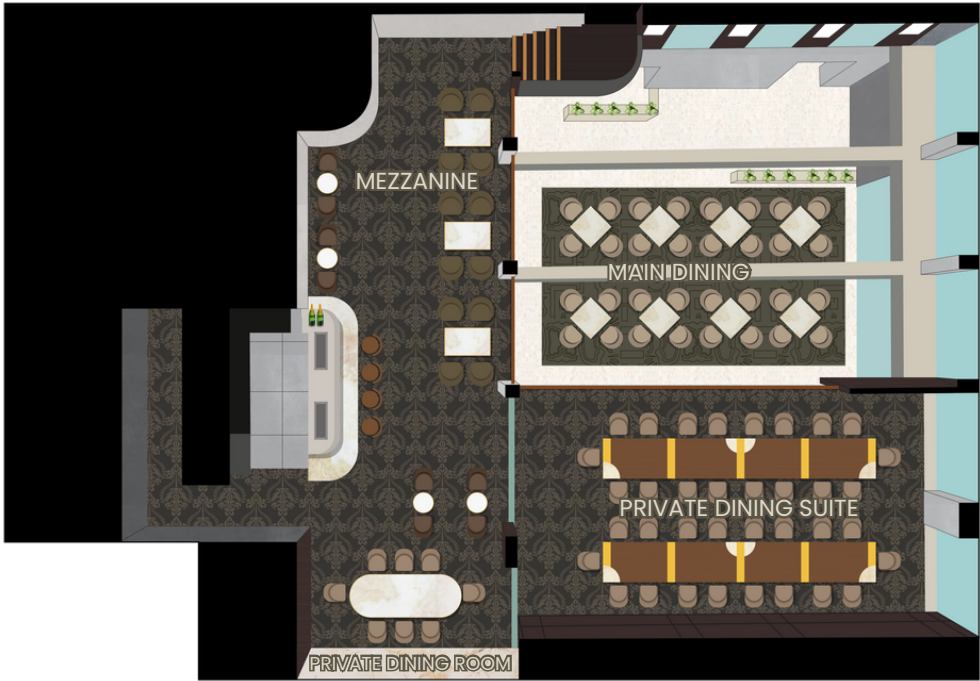
From overflowing champagne towers and caviar tastings to live entertainment with a grand piano and saxophonist, we have the expertise to deliver and help you throw the most talked function on your event calendar.

Looking for something more intimate and exclusive? Tama's private dining room seats up to 36 people in your own private space with specially curated menus and one of Brisbane's most extensive wine selections.

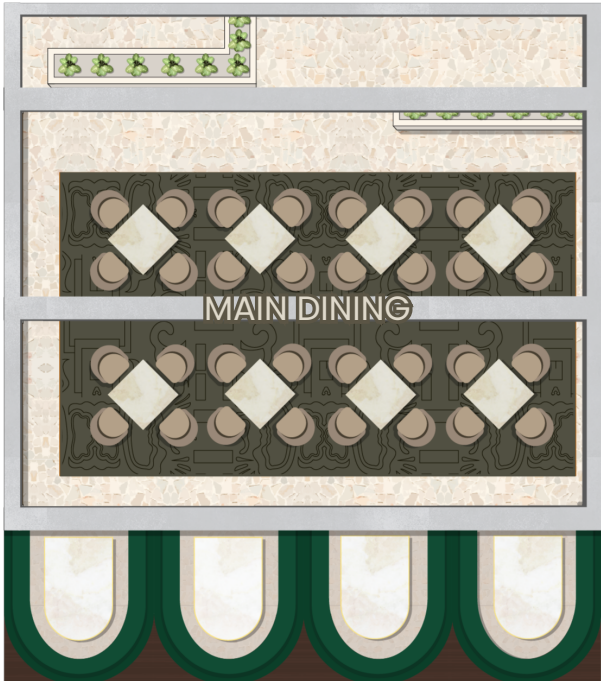


T A
M A

VENUE FLOOR PLAN & CAPACITIES



UPPER LEVEL



GROUND

SPACE

PAX

PRIVATE DINING ROOM
PRIVATE DINING SUITE
MAIN DINING
FULL VENUE

SEATED - 6- 10PAX
SEATED - 20-40PAX
SEATED - 70PAX | COCKTAIL - 120PAX
SEATED - 120PAX | COCKTAIL - 220 PAX

PRIVATE DINING SUITE

SEATED - 20 - 40PAX

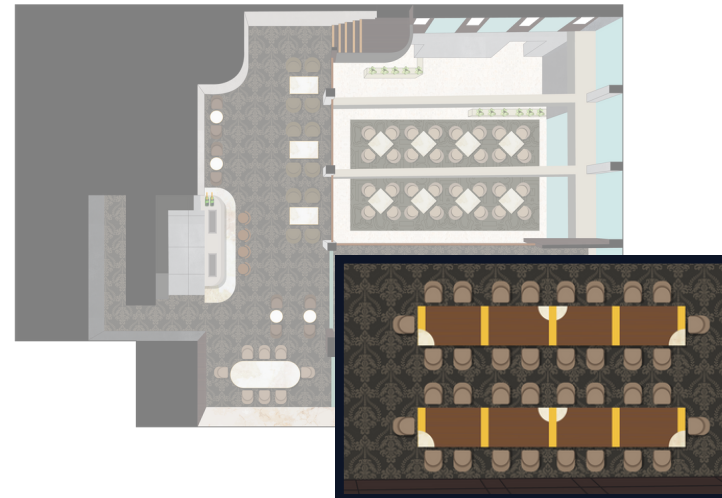
Embark on a culinary adventure in TAMA's luxury Private Dining Suite perched on our charming mezzanine level. As you ascend up the stairs, you'll be greeted by an inviting ambiance adorned with tasteful decor and warm lighting which flows through to the private dining experience that awaits.

The elevated setting offers a captivating perspective for your guests to bask in the vibrant atmosphere of the restaurant below whilst enjoying the intimacy of the Dining Suite.

The spacious layout is perfect for larger groups of up to 40 guests and offers tailored seating arrangements to suit your preferences. Whether that's one grand table set as the centerpiece for your event or the charm of two smaller tables.

Our dedicated staff will wine and dine you with the finest of service as you delve into our set menu, specially curated by renowned Executive Chef, Richard Ousby and our extensive selection of fine wines to compliment.

Your dining experience will be nothing short of exceptional.



PRIVATE DINING ROOM

SEATED - 6 - 10PAX

TAMA's intimate dining space is designed for smaller gatherings of 6-10 guests.

Our Private Dining Room offers the intimacy of a home dinner party with the distinctive flare of a premium setting. At the heart of the elegant space, stands a beautifully appointed table that encourages connection and conversation, making it the ideal space for any occasion.

Sit back and allow our world class chefs, sommeliers, and servers to pamper you whilst indulging in a set menu specially curated to showcase the finest seasonal ingredients and culinary craftsmanship. Elevated by a top tier beverage offering that can be tailored to your liking.

Experience the exclusivity and culinary mastery that awaits in our Private Dining Room, where every detail is carefully considered to exceed your expectations.



FULL VENUE

SEATED - 120PAX | COCKTAIL 220PAX

For the ultimate culinary soiree, full venue hire of TAMA can accommodate up to 120 guests for both seated and cocktail style events.

Beneath the heritage beams and mesmerising chandelier, your nearest and dearest are invited to experience the epitome of drinking and dining. Esteemed Head Chef, Richard Ousby, and award-winning sommelier Alan Hunter, lead guests on a journey of unforgettable moments.

The light filled venue is yours for the entire evening, and our expert team can work with you to curate your perfect food and beverage package. Embrace the extravagance of good taste with a TAMA event or function.



AUDIO VISUAL EQUIPMENT

- WIFI internet access
- Wireless handheld microphones
- 2 smart TVs in the dining suite
- Background Audio (throughout the venue)
- Stage Setup (*may incur an additional charge)

STYLING

We have a range of local suppliers who can assist with creating the look of your dreams, through decorations and table styling. Please contact our event managers for further information.

*additional charges may apply

ENTERTAINMENT

We provide background music for all of our guests to enjoy during standard operating hours. For those with exclusive venue hire, we can arrange DJ's, live entertainment, and roving performers based on your preferred style of music, event duration, budget or other specific function requirements for an additional cost.

Clients are also welcome to provide a playlist specific to your music preferences should a DJ not be a suitable option.

PLEASE NOTE: This does not form a part of the minimum spend requirement.

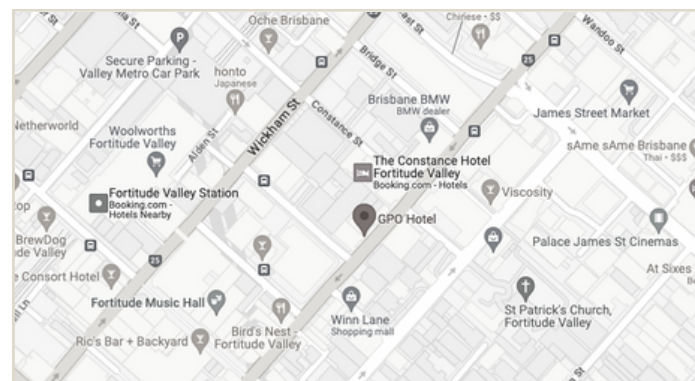
EXPERIENCE

- Wait & bar staff
- Exclusive use of the area
- Customisable set up to suit your event
- Flexibility of bringing your own cake, with a cakeage fee of \$50.00
- Experienced Function & Events Coordinator to assist with your planning



HOW TO FIND US

740 Ann St,
Fortitude Valley QLD 4006



BY TRAIN

Fortitude Valley Station
From station, on foot — 500m
Exit station to Brunswick St.
Head south-east towards Wickham St.
Turn right onto Ann St.
TAMA will be on your left

BY CAR

From car park, on foot — 190m
Exit car park on Warner St.
Head south-east onto Ann St.
Turn right onto Ann St.
TAMA will be on your left.